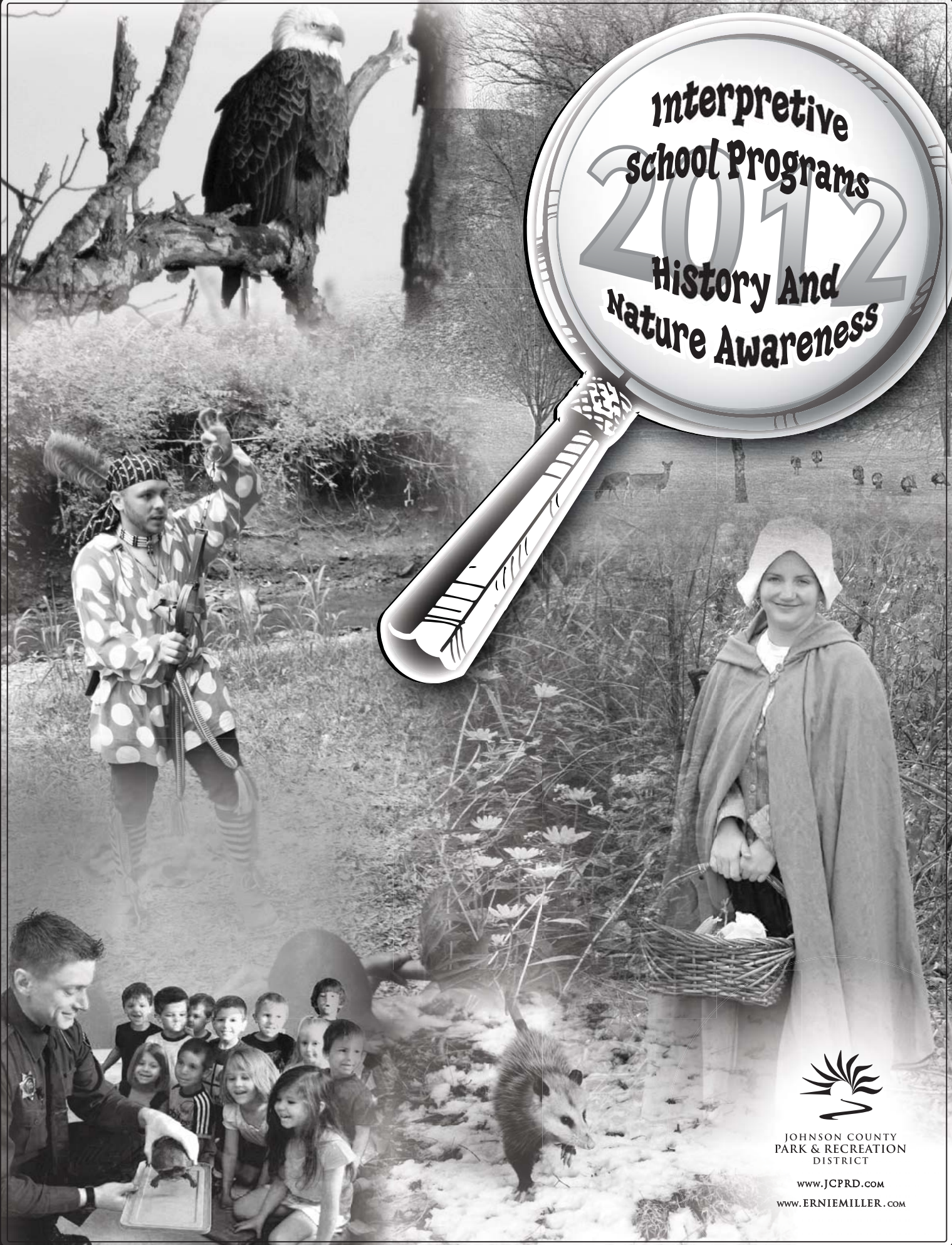


**Interpretive
School Programs
2012
History And
Nature Awareness**



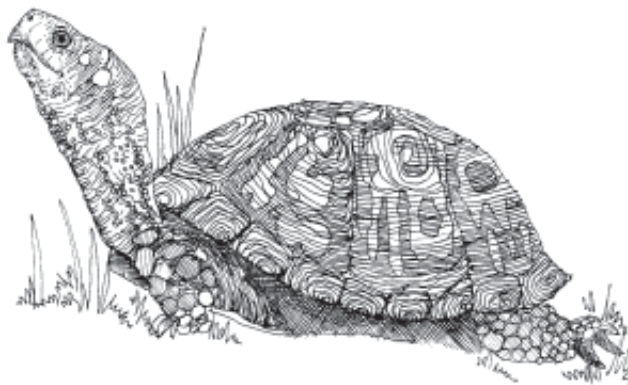
JOHNSON COUNTY
PARK & RECREATION
DISTRICT

www.JCPRD.com
www.ERNIEMILLER.com

Grade School Interpretive Programs

Our interpretive programs provide environmental and historical awareness and “hands on” educational experiences for students from pre-school through sixth grade. Our park police and naturalists have experience and educational backgrounds in the areas of natural resource management, fisheries and wildlife, biology, ecology, anthropology, outdoor recreation and education. Key Kansas curricular standards in science, history and/or geography are shown below each program description. Assessed standards are indicated by an asterisk. For more information and scheduling, please call (913) 764-7759.

GRADE Kindergarten



Animal Clues: Who's Been Here?

Investigate the clues left by wildlife. Students will be involved in science as full inquiry. Learn how to identify tracks, scat and other animal signs and determine what the animals were doing using the skills of observation and questioning. Experience how to “move like the animals”. Students will also touch many different animal furs and meet a special live animal guest.

KS Science standards: K-2nd: SC1.1.1,2,4,5; SC3.1.1,4

Location: Your School
Fee: \$55 / \$59 first program
\$40 / \$44 consecutive programs
Maximum: 35 students
Time: 45 minutes
(January and February)



“Great - The kids were actively listening and loved the animals. The kids were talking about it the rest of the day!”

Kindergarten Teacher, Trailwood Elementary

Kids & Critters

Take a up-close exploration through the world of wildlife. Introduce your class to a live native bird, reptile, and mammal. What are their characteristics, where do they live, and how do they survive? Discover their secrets and gain a deeper understanding of living things.

KS Science standards: K-2nd: SC1.1.1,2,4; SC3.1.1,2,4

Location: Kansas Schools
Fee: \$44 / \$49 first program
\$29 / \$33 consecutive programs
Maximum: 25 students
Time: 30 minutes
(September – March)

Also see:

Mysteries, Wonders and Myths

under 1st - 3rd grade section.
Program available for Kindergarten.

GRADE 1st - 3rd

The Tipi

Erect a full size tipi in your own schoolyard. Learn first-hand about the design and construction of this incredible home utilized by the Plains Indians. Students will be engaged as they learn about the rich history of the American Indians, their culture, and their interactions with their environment.

KS Social Study Standards: H1B211,2,4,5; G1B511,2,3; H2B111,2; H2B211,2,3; H2B311; G2B211; G2B311; G2B411; G2B511; H3B111; H3B211,2; H3B311,2,3; G3B211; G3B311; G3B411; G3B511,2

Location: Your School
Fee: \$89 / \$97 first program
 \$62 / \$67 consecutive programs
Maximum: 35 students
Time: 2 hours
 (March, October and November)

"The program fits so well with our unit on Native Americans. It covered all of the KS teaching objectives in an authentic manner. It's great!"

2nd Grade Teacher, Spring Hill Elementary

Mysteries, Wonders & Myths of Nature



What is there to be afraid of in the outdoors? Students will take a guided hike following clues to observe living things in various natural environments and to use scientific inquiry to dispel common misconceptions about snakes, insects, nighttime sounds, inclement weather and getting lost. With their newly discovered knowledge, students will answer questions about objects, organisms and events in the environment and apply safety procedures in the outdoors. During an interactive skit students will help three Park visitors (actors) to overcome their natural fears.

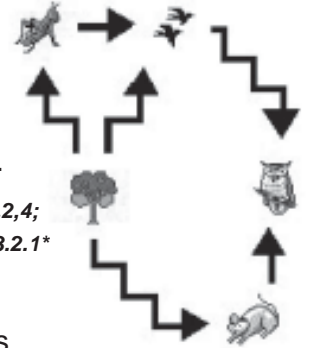
KS Science Standards: K-2nd: SC1.1.1,3,4; SC3.1.3,4; SC4.3.1,3; SC6.1.3

KS Social Studies Standards: GK&1B311; G1B512

Grades: K-2nd
Location: Ernie Miller Park
Fee: \$6.00 / \$6.50 per student
Minimum: 50 students or \$300 / \$325
Maximum: 120 students
Time: 9:00 – 11:30 am (April and May)

Wildlife Webs

Untangle the connections among Kansas wildlife as your students arrange components of food chains from local forest, pond, and prairie habitats. Students will compare the basic requirements of animals and plants and learn how organisms are adapted to meet their needs in different environments. Live animals from each food chain will illustrate contrasting life cycles.



KS Science Standards: K-2nd: SC1.1.1,2,4; SC3.1.1,2,4 / 3rd-4th: SC3.1.1*,2*,3; SC3.2.1*
KS Social Studies Standards: G3B311

Location: Kansas Schools
Fee: \$55 / \$59
 \$40 / \$44 consecutive programs
Maximum: 35 students
Time: 45 minutes
 (September – March)

"The children were very active participants...I heard wonderful comments and many new discoveries from the kids!"

2nd Grade Teacher, Hope Lutheran School

A Pilgrim From Plymouth



Celebrate Thanksgiving with a visit from a Pilgrim from Plymouth. Step back into the 17th Century as your students hear the story of the Pilgrims' perilous journey to America and their struggles to meet their basic needs in the "New World." Your students will be delighted as history comes to life and they hear about the Pilgrims' first Harvest Celebration.

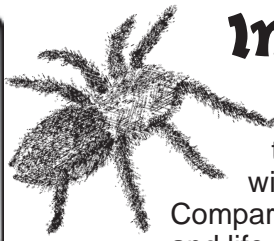
KS Social Studies Standards: H1B211; H1B313; H2B213; H2B312

Location: Your School
Fee: \$55 / \$59 first program
 \$40 / \$44 consecutive program
Maximum: 35 students
Time: 45 minutes
 (November)

"Our Pilgrim was fabulous! The character places herself in 1623 and appears so real to the students. It went right along with our study of Pilgrims and Thanksgiving."

2nd Grade Teacher, Prairie School

GRADE 1st - 3rd



Inspector Insector

The Inspector, that clever mysterious agent from the Insect Division, is hot on the trail, trying to solve a case. Your class will help untangle the Inspector's clues. Compare and contrast the parts, characteristics and life cycles of insects and arachnids. Students will be thrilled to meet the Inspector's friend, a live spider! This program makes a fun introduction or a rewarding conclusion to your unit on insects/arachnids and/or simple scientific investigation.

KS Science Standards: K-2nd: SC1.1.1,2,4 ; SC3.1.2,4 / 3rd-4th: SC 1.1.1*,2*,4*; SC3.1.1*,2*; SC 3.2.1*

Location: Your School
 Fee: \$55 / \$59 first program
 \$40 / \$44 consecutive programs
 Maximum: 35 students
 Time: 45 minutes (December - March)



Two Falling Voices

Life with the Seneca Tribe

Hear stories from long ago, as the students meet Two Falling Voices, an English woman who lived with the Seneca people. Discover how Native Americans structured their community by patterns in nature and living in harmony with the land. Learn about the Three Sisters as an important food and the Harvest Celebration. Hands-on activities will give students a glimpse into the past. Classroom packet provides vocabulary words and additional activities.

KS Social Studies Standards: H1B2I1,6; H2B2I3; H3B2I1,2; H3B3I3; H3B5I2

Location: Your School
 Fee: \$55 / \$59 first program
 \$40 / \$44 consecutive programs
 Maximum: 35 students
 Time: 45 minutes
 (November – March)



Whoooo Are the Owls?

What makes owls kings of the night? Bring your owl unit to life with a visit from live owls! Students will observe the structures of the owl and learn how these help the owl live nocturnally. Discover the needs and life cycles of these unique animals. Touch and examine wings, feathers and talons. Identify the owls by real calls and see an owl pellet.

KS Science Studies Standards: K-2nd: SC1.1.1,2,4; SC3.1.1,2,4

Location: Kansas Schools
 Fee: \$55 / \$59 first program
 \$40 / \$44 consecutive programs
 Maximum: 35 students
 Time: 45 minutes (September - March)



*"Wow, These programs bring history to LIFE!
 Two Falling Voices is wonderful!"*

1st Grade Teacher,
 Tomahawk Elementary

Also see:

Animal Glues

under Kindergarten section.
 Program available for
 1st - 3rd grade.

And:

Ecology Encounters, Wildlife Who's Who, & Snakes Alive

under 4th - 6th grade section.
 Programs available for 3rd grade.



Prairie Traveler

Step back into the year 1870 as "Mattie Johnson" shares the story of her life as a child moving onto the prairie. Tales of wagon trains, Indians, buffalo stampedes, sod houses and frontier education recreate the pioneer experience, a key period in the rich history of Kansas.

KS Social Studies Standards: H1B2I5, G1B5I1,2; H2B1I1; H2B2I1,3; G2B4I1; H3B1I1; H3B2I2

Location: Your School
 Fee: \$55 / \$59 first program
 \$40 / \$44 consecutive programs
 Maximum: 35 students
 Time: 45 minutes (January & February)

*"We love this program; it is perfect for our
 grade level. The class was totally enthralled."*

3rd Grade Teacher,
 Overland Trail Elementary

GRADE

..... 1st - 3rd



Kansas Symbols

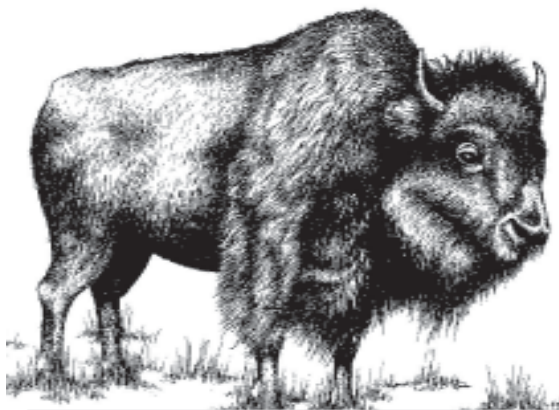
Celebrate the birthday of Kansas (Jan. 29) with the American bison, tiger salamander and sunflower, just a few of the natural symbols of our great state! We'll use the

Kansas flag to illustrate the major historical developments and changes in the human environment that led to Kansas statehood. With hands-on items and live animals, participants will compare the basic needs of native plants and animals and learn how different organisms use special adaptations and senses to survive in their respective environments.



KS Social Studies Standards: H1B2I1,2,5; H1B3I2; G1B5I1; H2B1I1; H2B2I1; G2B4I1; G2B5I1; H3B2I1; G3B4I1; G3B5I1,2
KS Science Standards: K-2nd: SC3.1.1 / 3rd-4th: SC3.1.1*,2*,3

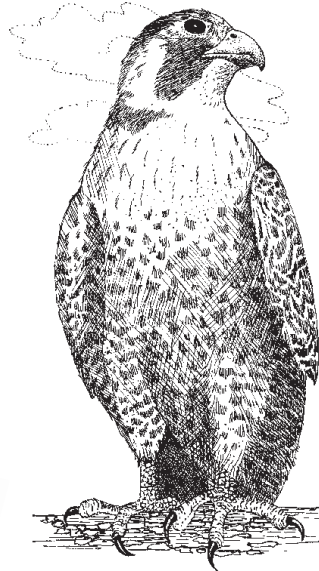
Location: Kansas Schools
Fee: \$55 / \$59 first program
 \$40 / \$44 consecutive program
Maximum: 35 students
Time: 45 minutes
 (January – February)



"This presentation was an excellent introduction to our unit on Kansas Symbols." 1st Grade Teacher,
 Prince of Peace School

GRADE

..... 4th - 6th

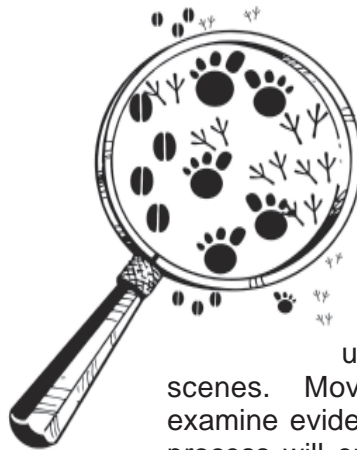


Birds of Prey

By day or night, out of the sky flies a rodent's nightmare, a bird of prey! Using specialized structures such as talons, beaks and wings, as well as highly attuned senses, the diverse raptors are some of nature's best hunters. Your students will see close-up live examples of these birds and their distinctive adaptations.

KS Science Standards:
 3rd-4th: SC3.1.1*,2*,3 / 5th-7th: SC3.5.2*

Location: Kansas Schools
Fee: \$55 / \$59 first program
 \$40 / \$44 consecutive bprograms
Maximum: 35 students
Time: 45 minutes
 (September – March)



Animal Scene Investigation

Can you be a detective and solve animal mysteries? This hands-on classroom session will involve participants in the investigations of unusual animal biofacts and wildlife scenes. Moving to different stations, students will examine evidence and make logical conclusions. This process will engage scientific inquiry, critical thinking, and the understanding of environmental conditions within an ecosystem.

KS Science Standards: 3rd-4th: SC1.1.1*,2*,4* / 5th-7th: SC1.1.1*,2*,3*,4*;
 SC1.2.1; SC1.3.1,2*; SC3.3.1*; SC3.4.1*,2; SC3.5.1,2*,3*

Location: Your School
Fee: \$59 / \$64 first program
 \$43 / \$47 consecutive programs
Maximum: 35 students
Time: 1 hour program (Please allow additional 10 minutes for set-up)
 (September – March)

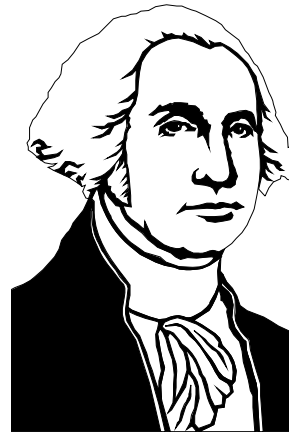
GRADE 4th - 6th

Lamp of Freedom

Freedom! It was the dream of living free that compelled slaves to travel north in the years before the Civil War. Step back in time along the Kansas-Missouri border as “Georgette Tucker” shares her story. Learn secrets of the Underground Railroad, a labyrinth of safe houses and ingenious hiding places. Classroom packet provides timeline, discussion questions and vocabulary words.

KS Social Studies Standards: H4B111; H4B21,2 ; G4B212; G5B212; G5B411,2,3,4,5; H6B411*

Location: Your School
Fee: \$59 / \$64 first program
\$43 / \$47 consecutive programs
Maximum: 35 students
Time: 1 hour (February)



Winter at Valley Forge

Winter 1777...Commander George Washington and his troops are stationed at Valley Forge, surviving bitter cold and harsh conditions in the fight for America’s future and the freedom of every citizen. Listen as the struggle for independence is told through the voices of patriots fighting for

liberty. Through the stories of Nathan Hale, Paul Revere and other American heroes the causes of the American Revolution are revealed. Classroom packet provides timeline, study questions and vocabulary words.

KS Social Studies Standards: H5B311*,2,3,4,7 ; H5B215; G5B411,4,5

Location: Your School
Fee: \$55 / \$59 first program
\$40 / \$44 consecutive programs
Maximum: 35 students
Time: 45 minutes
(December – January)

“A great insight into the 'real life' of American colonists during the Revolution.”

5th Grade Teacher,
Rising Star Elementary

2009 National Association of Interpretation - Region VI
Outstanding Interpretive Program

Heritage History Lab

Take your students “back in time” at Ernie Miller Nature Center as they encounter three different people from Kansas’ past in the outdoor setting of the park. During the 1700’s they will meet a French Canadian fur trapper, who describes his life on the waterways and prairies and how he trades with the Indians. They will also meet an Osage Indian who tells of the ways of his people and his interactions with the Europeans. During the 1800’s they will meet a pioneer, who relays the hardships of traveling to Kansas. These living history presentations will be followed in the afternoon by “hands-on” participation in pioneer games, erecting a tipi, and information to acquaint students with the prairie ecosystem.

2002 National Association of
Interpretation Region VI
Outstanding Interpretive Program

KS Social Studies Standards: H4B113,4,6; H5B111*,2,3*,4;
H5B214; G5B511

Location: Ernie Miller Park
Fee: \$7.00 / \$7.50 per student
Minimum: 80 students or \$560 / \$600
Maximum: 120 students
Time: 9:00 am – 2:00 pm
(September, October and November)

“We have been coming for over 15 years. After all these years, Stillwell is still thrilled about coming for this entertaining and educational program.”

4th Grade Teacher, Stillwell Elementary

“Really brings history alive – I refer back to these characters all year in school.”

5th Grade Teacher, Crestview Elementary

GRADE 4th - 6th

Ecology Encounters

Spend the day outdoors exploring and comparing aquatic, woodland and prairie habitats in Ernie Miller Park while solving a puzzle using scientific inquiry. Teams will use maps and compasses and answer riddles to discover and appreciate the Circle of Life. The mysterious "Old Man" and the "Keepers" will illustrate energy flow and balance among producers, consumers and decomposers.

KS Science Standards: 3rd-4th: SC1.1.1*,2*,4*; SC3.1.1*,2*,3; SC3.2.1*; SC5.2.3; SC6.2.1; / 5th-7th: SC3.3.2; SC3.4.1*,3*; SC6.2.1*; SC6.3.1
KS Social Studies Standards: G3B111; G3B211; G3B311; G3B511; G4B111; G4B211 G4B311,3; G5B111; G5B413; G6B111*; G6B511

Grades: 3rd – 6th
Location: Ernie Miller Park
Fee: \$7.00 / \$7.50 per student
Minimum: 50 or \$350 / \$375
Maximum: 90 students
Time: 9:00 am – 1:30 pm
(April and May)

"Students had feelings of accomplishment and involvement. Thank you for a very pleasant and educational program."

5th Grade Teacher, Christ the King School



National Association of Interpretation Region VII
Outstanding Interpretive Program

2003

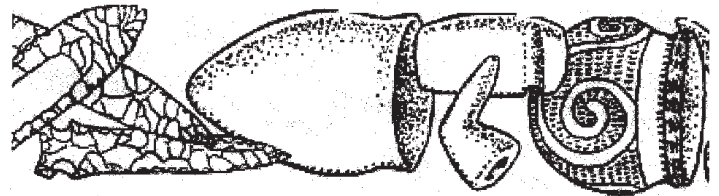
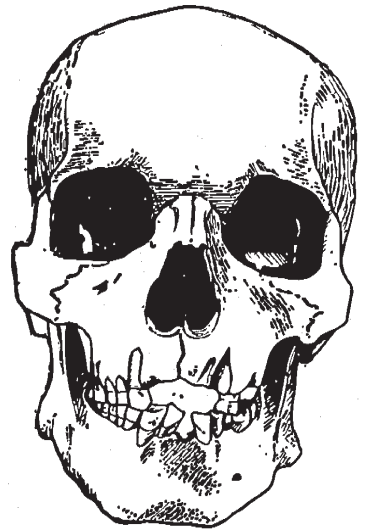
Kansas Recreation and Park Association
Natural Resource Award

"This is such a wonderful program. We look forward to it every year. It is a great supplement to our social studies curriculum."

4th Grade Teacher, Prairie School

Archeology Dig

Watch as your students become archeologists to discover who was here before us. The archeology program is designed to introduce students to the application of scientific principles to answer questions about past cultures using scientific inquiry. They will excavate real artifacts during a simulated dig and apply mapping techniques by measuring, plotting and recording their discoveries. Throughout the day the students will be learning to reach logical conclusions based on available evidence. After lunch the students will get to participate in a primitive technologies workshop including fire building, paint materials and symbols, games and entertainment. These hands-on activities will provide insight into how the archeologists reconstruct the culture of ancient societies and tell the "story" of prehistoric humans.



KS Science Standards: 3rd-4th: SC1.1.1*,2*,3*,4*; SC2.1.1*,2*; SC5.2.1,3,4,5; SC7.1.1/5-7th: SC1.1.1*,2*,3*4*; SC1.3.2*; SC5.2.1,3
KS Social Studies Standards: H4B4; H5B416; G5B512; H6B1; H6B2; H6B3; H6B5; G6B513

Location: Ernie Miller Park
Fee: \$7.00 / \$7.50 per student
Minimum: 30 or \$210 / \$225
Maximum: 70 students
Time: 9:00 am – 2:00 pm
(January and February)

1991 National Association of Interpretation, Region VI,
Outstanding Interpretive Program

GRADE 4th - 6th



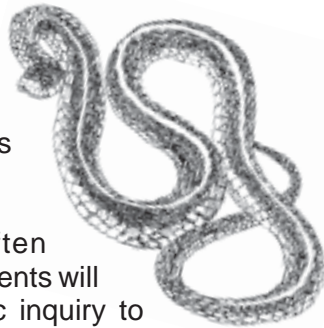
Wildlife Who's Who

Bring live animals to your classroom! Explore their differences and similarities up close. Observe 5 animals and discuss how they are classified. Your students will see 4 types of vertebrates including a mammal, bird, amphibian and reptile. They will also see one type of invertebrate. Discover these animal's life cycles, adaptations, behavior, habitats and characteristics.

KS Science Standards: 3rd-4th: SC3.1.1*,2*,3; SC3.2.1*
5th-7th: SC3.3.1*,2; SC3.5.1,2*

Grades: 3rd – 6th.
Location: Your School
Fee: \$55 / \$59 first program
\$40 / \$44 consecutive programs
Maximum: 35 students
Time: 45 minutes
(September – March)

Snakes Alive



By examining the characteristics of several live Kansas snakes, students will develop an understanding of these often maligned legless reptiles. Students will use observation and scientific inquiry to debunk common myths and fears about snakes and recognize their important role in ecosystems. Factual discussion about snakes will include physical traits, size ranges, reproduction, adaptive coloration, sorting by predation type, and safety.

KS Science Standards: 3rd-4th: SC1.1,3* ; SC3.1.1*,2*,3 ; SC3.2.1*
5th-7th: SC1.1.3*; SC3.3.1*,2; SC3.4.1* ; SC3.5.1,2*

Grades: 2nd & Up
Location: Your School
Fee: \$55 / \$59 first program
\$40 / \$44 consecutive programs
Maximum: 35 students
Time: 45 minutes
(September – March)

GRADE 6th



TimberRidge Adventure Center

Get your students on **TRAC**, to learn **Teambuilding, Respect, Adventure, and Creativity** with a unique adventure on the

Challenge Course at TimberRidge Adventure Center. This field trip is for students in grades 6th and up. Students will explore nature in the woods with a trained facilitator as they learn the art of working as a team. They will experience problem solving, critical thinking, respecting different opinions, achieving goals, the consequences of decisions and choices students make, conflict resolution skills, and how to deal effectively with peer pressure in a non-threatening natural environment.

Supports KS Counseling Standards in Personal and Social, Academic and Career Development for 6th - 8th grades.

KS Science Standards: SC6.1.1; SC6.3.2
KS Math Standards: 6th: 2.4.K1; 7th: 2.4.K1; 8th: 2.4.K1
KS Social Studies Standards: C-G6B5I2; C-G7B1I3; G6B4I2*

Location: TimberRidge Adventure Center
Fee: \$15.00 / student for the low course
\$25.00 / student for the high course
Maximum: 120 students per day. For larger groups we will schedule multiple days on the course.
Time: 9:00 am – 2:00 pm

For TimberRidge Adventure Center information and scheduling, please call (913) 856-8849.

Program fees are subject to change without notice

Fee Structure: 10% Discount now offered for Johnson County residents!
1st price – County Resident
2nd Price – Non-Residents



JOHNSON COUNTY
PARK & RECREATION
DISTRICT

