

Preschool Nature Awareness Programs (Ages 3-5)

Our Park Police and Naturalists teach a variety of fun environmental education programs for preschoolers. Register soon; availability is limited and is on a first-come, first-served basis.

Call (913) 764-7759 for information and scheduling.

YEAR-ROUND PROGRAMS

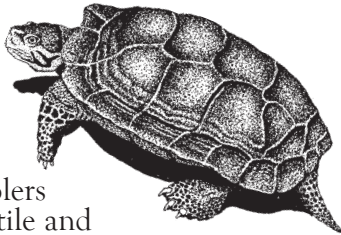
ANIMAL TALES

Have a wild time with wildlife stories from around the world! These tales will come to life in your classroom with live animals and real animal artifacts.



KIDS & CRITTERS

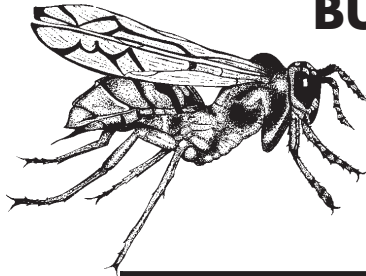
Go on a Kansas safari. Introduce your preschoolers to a live amphibian, reptile and mammal. Discover their secrets and a whole lot more.



SHINY SCALES & SLIPPERY TAILS

Puzzling pieces come together to reveal the mysteries of amphibians and reptiles. Put them into the magic box and meet the real critters: a smiling salamander, leaping lizard and a slithering snake.

BUG BUDDIES



Your preschoolers will float like a butterfly and sing like a bee as they discover why insects are our friends. They will meet a live spider too.

FALL PROGRAMS

CREEPY CRITTERS

Available in September and October

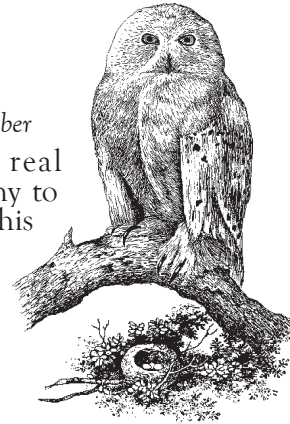
"Who! Who!" goes there?

Halloween can be a little scary, but your preschoolers will catch on in a flash when their eyes behold a tarantula, toad, and owl; the real animals behind the Creepy Critters.

JOHNNY APPLESEED

Available in September and October

Jonathan Chapman was a real American Hero! Invite Johnny to your classroom to hear about his travels and adventures. Stories, songs, and a special animal friend will delight and captivate preschool audiences and all those young at heart.



**ERNIE MILLER PARK
NATURE CENTER**
Call (913) 764-7759

NEW FEE STRUCTURE

**10% Discount Now Offered
for Johnson County Residents!**

1st price - County Residents 2nd Price - Non-Residents

WINTER PROGRAMS

December, January, February and March



WINTER WILDLIFE

Perry Possum, Professor Groundhog and Raymond Raccoon, our lovable puppet friends, will win your preschoolers over with their stories and song. Our discovery bags will prepare the children for the puppets' message about animal hibernation and migration. A perfect way to celebrate Groundhog Day.

FEATHERED FRIENDS

Through songs and activities, discover the wonderful world of birds. Listen to bird calls, see a live bird, dance a bird bop and make a craft.

A VISIT FROM SANTA CLAUS

Santa will be down from the North Pole during the month of December. During this 45-minute presentation he will explain the winter habits of his animal friends and help the children construct a gift for the wildlife. Of course Santa will have a gift for each child and will listen to their Christmas gift list at the conclusion of the program.

TEDDY BEAR PICNIC

Have your preschoolers invite their favorite stuffed bear as they hear Golidilock's story and discover what she learned about bears. Dance, sing, then cuddle up with your teddy bear as we play the hibernation game. Learn about bears from around the world.



PRICING INFORMATION

A VISIT FROM SANTA CLAUS

Your Location \$49/\$54 first program
\$37/\$41 consecutive programs

Ernie Miller

Nature Center \$37/\$41 program

Length of Program: 45 minutes

Maximum Number of Children: 25

ALL OTHER PRESCHOOL PROGRAMS

Your Location *Live Animal Programs
conducted in Kansas only*
\$45/\$49 first program
\$29/\$32 consecutive programs

Ernie Miller

Nature Center \$29/\$32 program

Length of Programs: 30 minutes

Maximum Number of Children: 20



All prices are subject to change.

*Programs outside of Johnson County
will be subject to a \$10 travel fee.*

Call

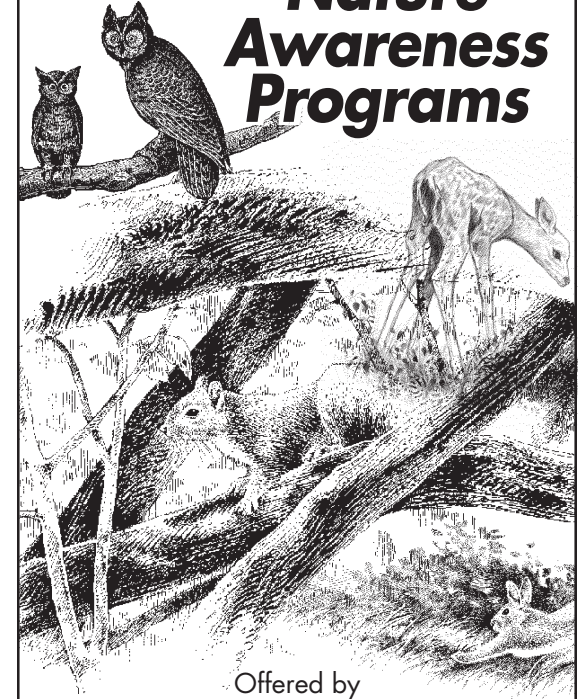
(913) 764-7759
to register for programs.

NOTE: To provide you quality programming, the maximum for most programs has been set at 20 students. However, special arrangements can be made for classes up to 25, with a \$1 charge per each child over the maximum.

**ERNIE MILLER PARK
NATURE CENTER**
909 N. Highway 7, Olathe, Kansas 66061
For information call: (913) 764-7759
or go online at www.erniemiller.com



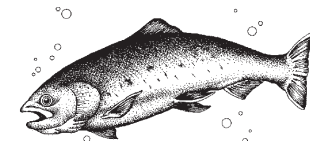
PRESCHOOL Nature Awareness Programs



Offered by

**PARK NATURALISTS
& PARK POLICE**

of the



JOHNSON COUNTY
PARK & RECREATION
DISTRICT

www.JCPRD.com

